



# Rethinking Digital Transformation In The Central Region – The 4\*6 Approach

# DIGITAL TRANSFORMATION STAGES



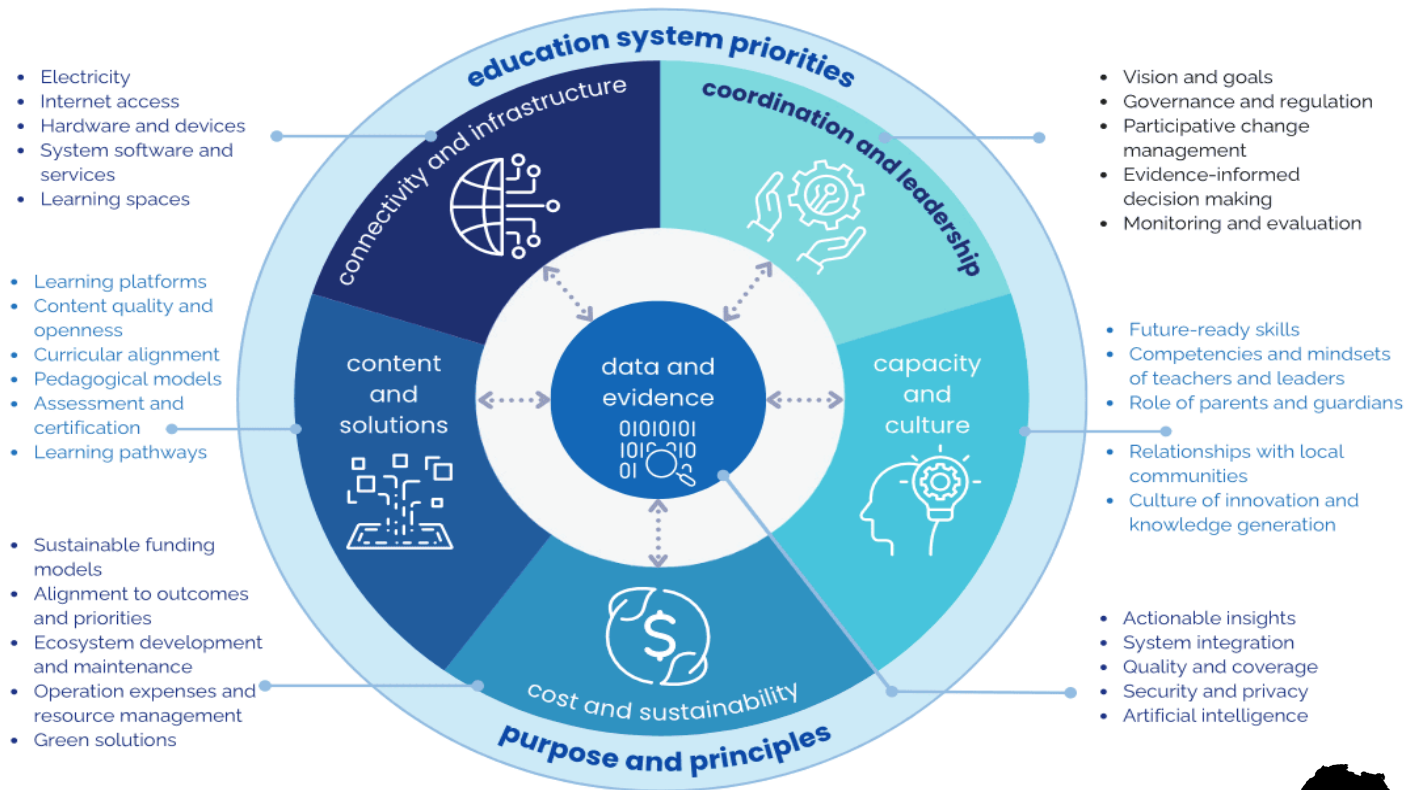
STAGES	DEFINATIONS
<b>Awareness</b>	Stakeholders recognize the value of digital education, establish foundational knowledge, and align vision and infrastructure to enable basic access to EdTech tools.
<b>Application</b>	Digital tools are actively used to enhance teaching and learning, with stakeholders applying technology to deliver curriculum, monitor progress, and build learner competencies.
<b>Infusion</b>	EdTech becomes embedded in daily practices; stakeholders innovate independently, collaborate across institutions, and support learner-driven initiatives and personalization.
<b>Transformation</b>	Stakeholders champion EdTech at global levels, driving innovation, creating systemic change, and fostering a culture of lifelong learning, leadership, and decentralized access.

# METRICS ACROSS STAGES



Stage / Stakeholder	Students	Teachers	Administration	Parents/Caregivers	Key Metrics
<b>Awareness</b>	<ul style="list-style-type: none"> <li>- Understand tools</li> <li>- Use personal accounts</li> <li>- Understand Digital safety</li> </ul>	<ul style="list-style-type: none"> <li>- Operate LMS</li> <li>- Begin integration</li> </ul>	<ul style="list-style-type: none"> <li>- Know policies</li> <li>- Begin infra setup</li> </ul>	<ul style="list-style-type: none"> <li>- Understand EdTech value</li> <li>- Support policies/budget</li> </ul>	<ul style="list-style-type: none"> <li>- Integration rate</li> <li>- Device ratio</li> <li>- Resource use</li> <li>- Budget</li> <li>- Vision alignment</li> </ul>
<b>Application</b>	<ul style="list-style-type: none"> <li>- Complete tasks</li> <li>- Use 4Cs</li> <li>- Research-based learning</li> </ul>	<ul style="list-style-type: none"> <li>- Use Learner-centered methods</li> <li>- Make data driven decisions to improve learning outcomes</li> </ul>	<ul style="list-style-type: none"> <li>- Provide support/training through data driven decisions</li> <li>- Enforce policy that support deliberate application of edtech to drive learning</li> </ul>	<ul style="list-style-type: none"> <li>- Monitor &amp; celebrate progress</li> </ul>	<ul style="list-style-type: none"> <li>- Comprehension rate</li> <li>- Integration rate</li> <li>- Improvement index</li> <li>- Skills acquisition</li> </ul>
<b>Infusion</b>	<ul style="list-style-type: none"> <li>- Join digital clubs</li> <li>- Lead projects</li> <li>- Peer learning</li> </ul>	<ul style="list-style-type: none"> <li>- Curate content</li> <li>- Facilitate learning by use of Project based with</li> <li>- Data-driven</li> </ul>	<ul style="list-style-type: none"> <li>- Invest in infra</li> <li>- Inter-school collab</li> </ul>	<ul style="list-style-type: none"> <li>- Invest in devices</li> <li>- Support at home</li> </ul>	<ul style="list-style-type: none"> <li>- Peer innovation</li> <li>- Projects</li> <li>- Content curation</li> <li>- Parental investment</li> </ul>
<b>Transformation</b>	<ul style="list-style-type: none"> <li>- Global collaboration</li> <li>- Awards &amp; leadership</li> </ul>	<ul style="list-style-type: none"> <li>- Coach globally</li> <li>- Champion EdTech</li> </ul>	<ul style="list-style-type: none"> <li>- Support Decentralized hubs</li> <li>- Global collaboration to influence policy and learn best practices</li> </ul>	<ul style="list-style-type: none"> <li>- Champion at home</li> <li>- Support innovation</li> </ul>	<ul style="list-style-type: none"> <li>- Global contributions</li> <li>- AI use</li> <li>- Data literacy</li> </ul>

# THE 6 PILLARS FOR DIGITAL TRANSFORMATION



# Discussion Questions



- 1. *How does strong coordination and leadership enable stakeholders—like in Masomo Kisasa—to move from recognizing the need for EdTech (awareness) to fully championing systemwide innovation (transformation)?***
- 2. *In the context of Masomo Kisasa, how does improving connectivity and infrastructure support progression through all four digital transformation stages***
- 3. *How can Masomo Kisasa build a cost-effective and locally owned model to support sustainable EdTech transformation across the four stages?***
- 4. *How can Masomo Kisasa invest in teacher capacity and community mindsets to ensure inclusive and adaptive culture as digital transformation evolves?***
- 5. *How can Masomo Kisasa ensure that the content and EdTech solutions it deploys progress from basic delivery tools to transformative learning experiences aligned with 21st-century competencies?***
- 6. *In what ways can Masomo Kisasa leverage data and evidence to guide its digital journey from initial awareness to systemwide transformation?***

	<b>AWARENESS</b>	<b>APPLICATION</b>	<b>INFUSION</b>	<b>TRANSFORMATION</b>
<b>Coordination &amp; Leadership</b>				
<b>Connectivity &amp; Infrastructure</b>				
<b>Cost &amp; Sustainability</b>				
<b>Capacity &amp; Culture</b>				
<b>Content &amp; Solution</b>				
<b>Data &amp; Evidence</b>				